

## Edwin API Overview

The Edwin API Services allow issuers, large investors and tool vendors to seamlessly integrate Edwin into their applications. With this capability, users can submit and download ABS deal data directly from their applications without using the European DataWarehouse (ED) website or the toolkit.

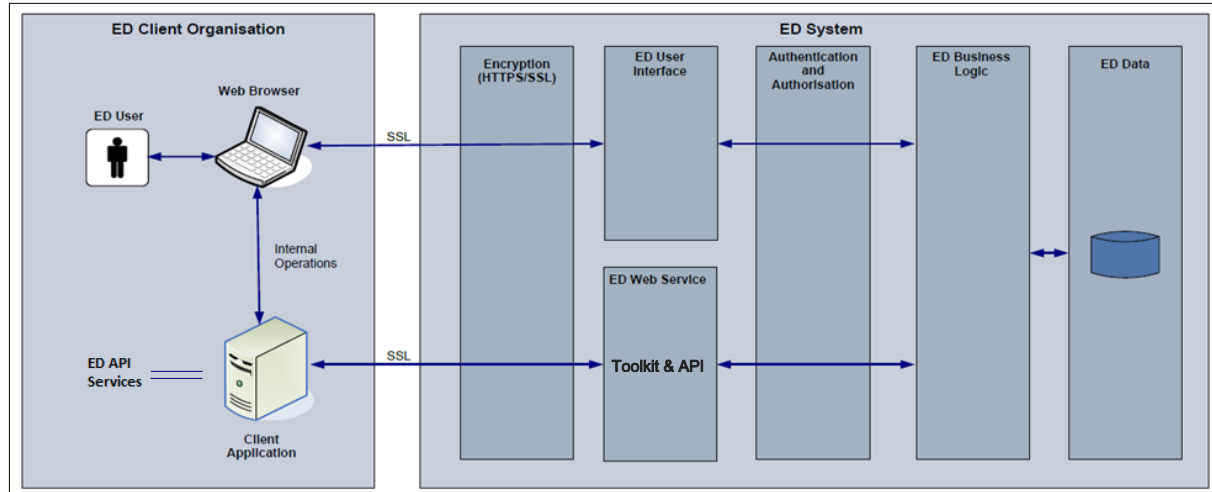
Benefits of Edwin API Services for your workflow:

- ✓ Easy to integrate into your own applications
- ✓ Secure connection through SSL connection and authentication services
- ✓ Platform and technology independent to provide interoperability
- ✓ Standard technologies: XML, SOAP, WSDL
- ✓ Support for transfer of large files through SOAP Message Transmission Optimization Mechanism

### Edwin System Architecture

Edwin facilitates submitting loan-level data for ABS transactions in accordance with the European Central Bank eligibility criteria in XML format and makes this information available to market participants.

The diagram below explains how the Edwin system interacts with its client users and client applications.



Edwin System ensures a secure transaction through the implementation of SSL encryption and an additional username and password for the authentication/authorization.

### File Encryption

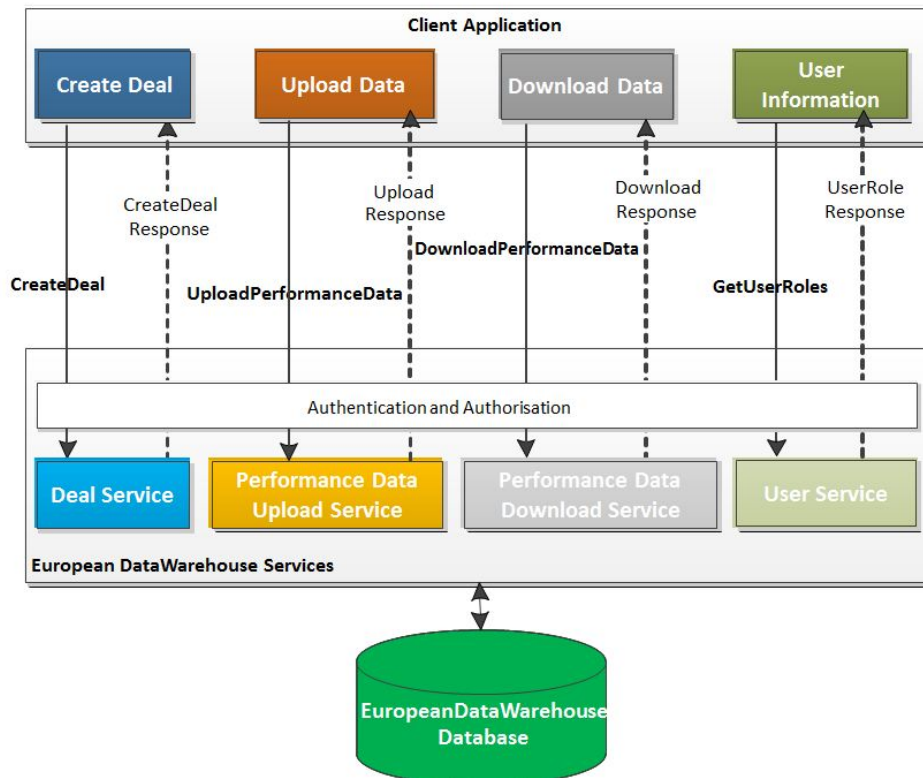
The Data Provider sends ED its public key, prior to uploading loan performance data, to verify their signature. During the uploading loan performance data is digitally signed using their private key.

This allows deal information requested by Data Users to be verified by using the ED public key to validate the signature included in the response document to ensure the integrity of the deal data.

**Web Services**

The Edwin API services support 30 operations through the following web services:

- **Deal Service** – Supports deal creation, update, and other deal search queries
- **Performance Data Upload Service** – Supports the upload of the loan level performance data
- **Performance Data Download Service** – Supports the download of the deal performance data
- **User Service** – Provides access to a list of Data Providers and client user roles



If you need more detailed information about the Edwin API services, please do not hesitate to contact us at [enquiries@eurodw.eu](mailto:enquiries@eurodw.eu)